

Panorama Pivot Table for Local Cube Files

Overview

In today's world, more and more businesses are working on a global scale and within many of these organizations, there are an increasing number of distributors or employees who spend the majority of their time off-site. With this comes a need to expose organizational data to these parties with high reliability, accuracy and interactivity, thus empowering them with a full understanding of the business along with ability to visualize critical information.

Panorama Pivot Tables for Offline Cubes provides just that! It allows users in an organization to export their data to the world and collaborate with different people through the familiar and widely-used Google gadgets and dashboards.

Definitions

- ▶ **CUB File** – an offline cube file is a file with .cub extension that stores a portion of the source data from an OLAP server database.
- ▶ **OLAP (OnLine Analytical Processing)** – a database technology that is optimized for querying and reporting; OLAP is an approach towards querying and reporting that quickly provides answers to analytical queries that are multi-dimensional in nature.

Using the Panorama Pivot Table for Local Cube Files

Creating a CUB File

Local cube files are created from SQL Server Analysis Services cubes and can be created using Microsoft Excel or Cubeslice, a dedicated desktop application. Cubeslice can be downloaded from:

<http://www.cubeslice.com/googledocs/cubeslicegdocinstall.exe>

Once the cube file has been created, the next step in the process is to ensure that it is locally accessible for you and that it also complies with the following requirements:

- ▶ The cube can be used either as a .cub file or as a .zip file.
- ▶ SQL Server Version: only Cubes created for Microsoft SQL Analysis Services 2005 are supported. Cubes created for previous versions will result in unexpected behaviors.
- ▶ Size limitations:
 - Single cube or zip upload size limit – 20 MB
 - Total storage per user – 50MB
- ▶ Multiple catalogs can be included in a single cube file

If you do not have CUB files or do not know how to create them, please ask your system administrator about the process. Otherwise, there is a good chance that this gadget might not answer your specific usage scenario requirements.

Adding the Panorama Enterprise Gadget to your Google Dashboard

1. After logging in to your Google dashboard, click "Add stuff" on the top right side of the page.



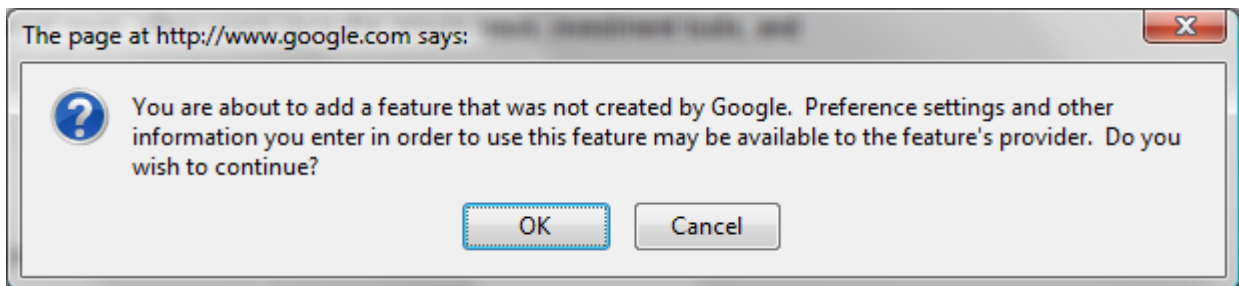
2. On the left hand side of the screen, you will see a link to add a gadget using a path.



3. Clicking the link will open a small window.



4. Paste the URL provided to you and hit "Add".
5. You might be presented with a warning, telling you that you are adding a third party gadget. Confirm the message and continue.



6. Go back to your Google dashboard by clicking the link on the top or navigating directly to the dashboard

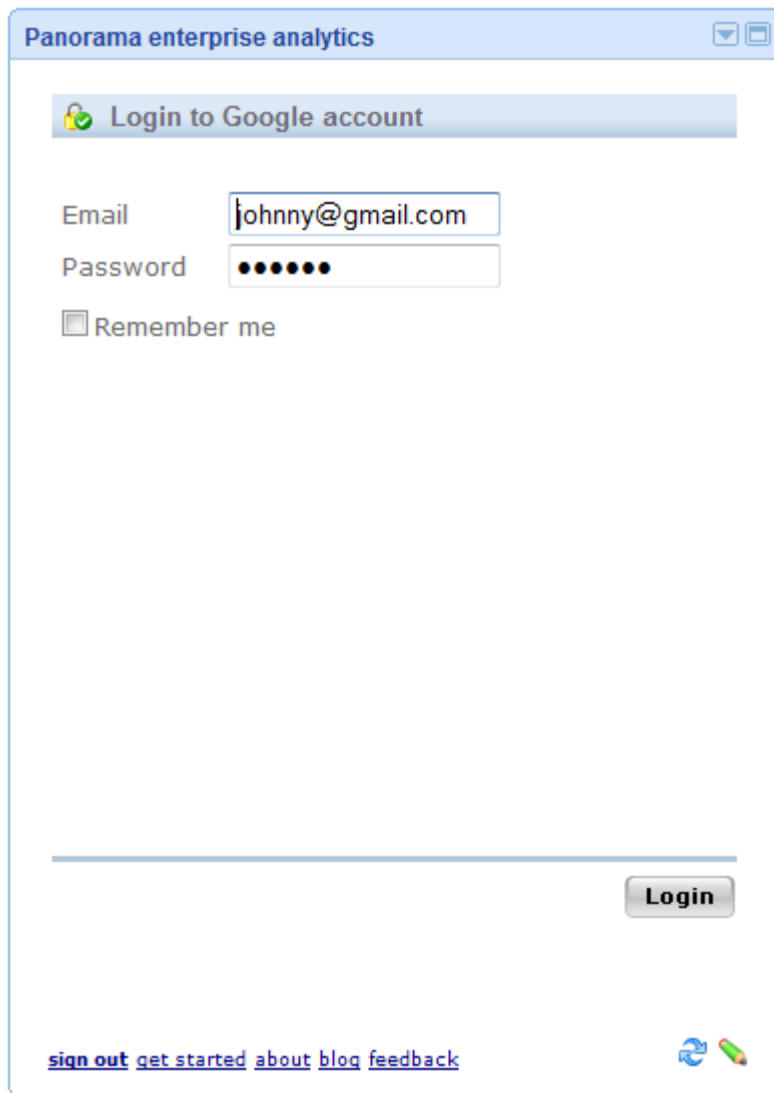
[Web](#) [Images](#) [Maps](#) [New](#)

[« Back to iGoogle home](#)

Using the New Gadget

Login

Login using your Google account.

A screenshot of a web browser window titled "Panorama enterprise analytics". The window contains a login form with the following elements:

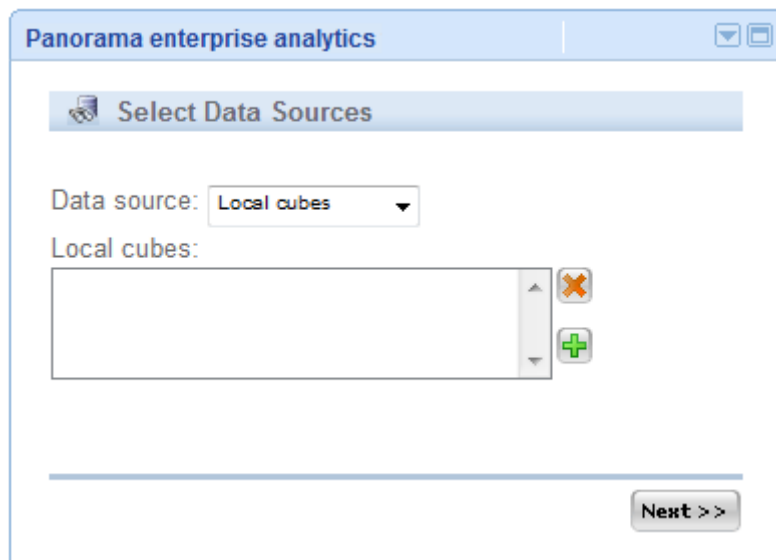
- A header bar with a lock icon and the text "Login to Google account".
- An "Email" label followed by a text input field containing "johnny@gmail.com".
- A "Password" label followed by a password input field with seven black dots.
- A checkbox labeled "Remember me".
- A "Login" button at the bottom right.
- A horizontal line above the footer.
- A footer containing the links "sign out", "get started", "about", "blog", and "feedback" in blue text.
- Two small icons (a blue circular arrow and a green pencil) in the bottom right corner of the footer area.

Note that at any point, if you would like to sign-out of the gadget, you can do so by clicking the 'sign out' link on the bottom of the gadget. Logging off will not erase any of your cube files.

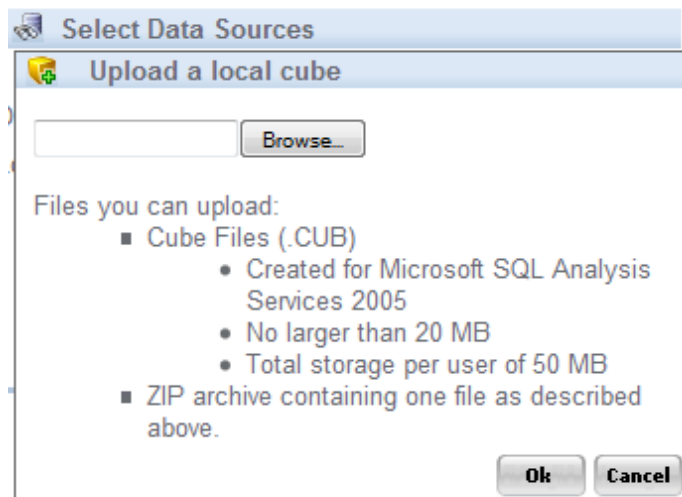
Cube Management

After logging in, you will be presented with a wizard that allows you to manage your existing cubes or add new ones.

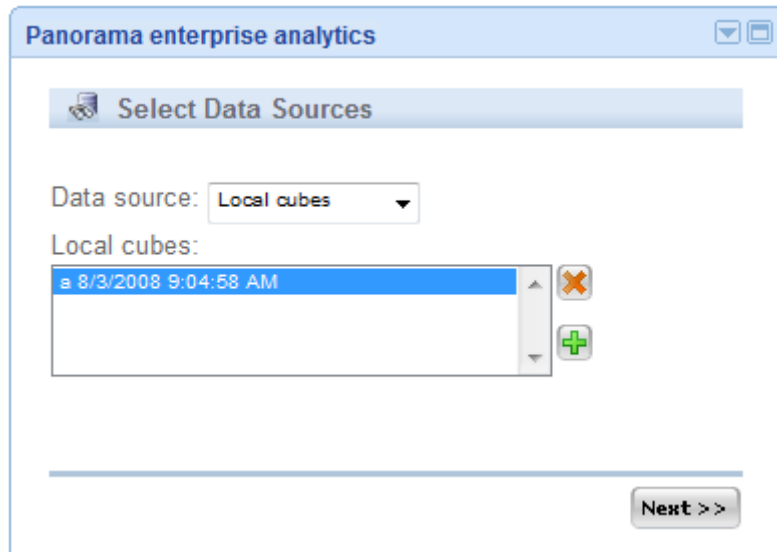
1. Select the  sign to add a new cube.



2. You can then enter or browse for the CUB file. Once entered or found, select OK and allow the file to be uploaded to the hosted environment. Note that this process can take time, depending on your connection upload speed and size of file. Please note that it is recommended to use ZIP files as they reduce file sizes significantly.



- Once the cube is done uploading, you can select it from the list and hit next.



Panorama enterprise analytics

Select Data Sources

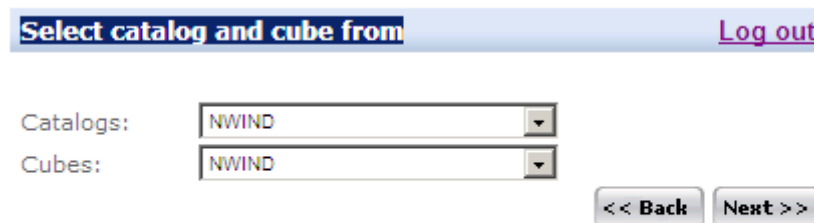
Data source: Local cubes

Local cubes:

- 8/3/2008 9:04:58 AM

Next >>

- If your CUB file includes more than one catalog or cube, you will be presented with the following dialog, allowing you to select a catalog and cube.



Select catalog and cube from [Log out](#)

Catalogs: NWIND

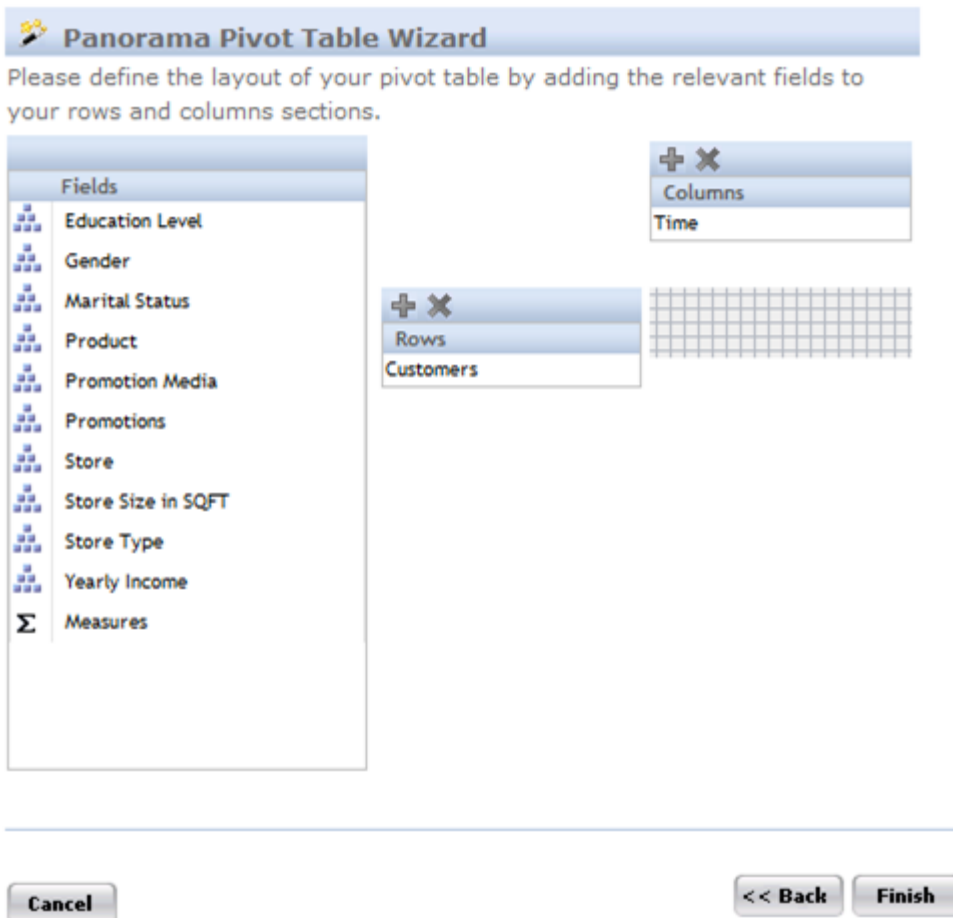
Cubes: NWIND

<< Back Next >>

Setting the Initial Layout for your Analysis

At this point, you are almost ready to start your analysis. All that is left is to set the initial layout of your grid. To structure your view, select any of the fields on the left, and then add it to the rows or columns. You can have multiple fields on each axis.

Alternatively, you can skip this stage by clicking the 'Finish' button and the system will automatically select a layout for you.



Panorama Pivot Table Wizard

Please define the layout of your pivot table by adding the relevant fields to your rows and columns sections.

Fields	Columns	Rows
Education Level	Time	
Gender		
Marital Status		
Product		
Promotion Media		
Promotions		
Store		
Store Size in SQFT		
Store Type		
Yearly Income		
Measures		

Cancel **<< Back** **Finish**

Start Your Analysis!

You have completed your preparations and can now perform your data navigation.

Panorama enterprise analytics

PanoramaBeta Sales Count by Time over Customers

			1997					
			Q1			Q2	Q3	Q4
			1	2	3			
<input type="checkbox"/> USA	<input type="checkbox"/> CA	<input type="checkbox"/> Altadena	35	63	72	210	199	262
		<input type="checkbox"/> Arcadia	47	55	58	190	212	221
		<input type="checkbox"/> Bellflower	37	109	59	236	258	293
		<input type="checkbox"/> Berkeley			27	21	15	23
		<input type="checkbox"/> Beverly Hills	81	71	82	179	205	289
		<input type="checkbox"/> Burbank	61	96	63	242	237	290
		<input type="checkbox"/> Burlingame	1	14	7	62	19	15
		<input type="checkbox"/> Chula Vista	70	74	74	201	281	248
		<input type="checkbox"/> Colma	2	5	1	30	17	26
		<input type="checkbox"/> Concord		3	6	13	20	25
		<input type="checkbox"/> Coronado	48	53	40	231	184	200
		<input type="checkbox"/> Daly City	3	14	14	10	23	18
		<input type="checkbox"/> Downey	96	119	48	310	249	255
		<input type="checkbox"/> El Cajon	51	61	100	148	227	225
		<input type="checkbox"/> Fremont	2		4	32	39	21
		<input type="checkbox"/> Glendale	60	68	94	262	240	337
		<input type="checkbox"/> Grossmont	53	54	71	155	198	133
		<input type="checkbox"/> Imperial Beach	52	35	48	127	140	122
		<input type="checkbox"/> La Jolla	90	39	35	178	135	122
		<input type="checkbox"/> La Mesa	72	31	42	166	153	127
		<input type="checkbox"/> Lakewood	65	86	87	214	177	218

6 30 of 47

[sign out](#) [get started](#) [about](#) [blog](#) [feedback](#)

Sharing & Collaborating

The powerful Google framework offers easy collaboration and sharing of your information with others. The following are a few facts to keep in mind about sharing when utilizing the Panorama Enterprise Gadget:

1. When you use the gadget sharing option, other users that receive the gadget will be presented with the same layout as you last saved the gadget.
2. Note that if you delete the cube that you based the gadget on, then other users will not be able to further view the cube data.
3. Users that you shared a gadget with, will not see your cube in their cube list.

Further Reading & Related Documents

For a full tutorial on the gadget functionality and operation after you created its initial layout, please refer to the tutorial located at the following address:

<http://www.panorama.com/google/pivot-table/tutorial/>